

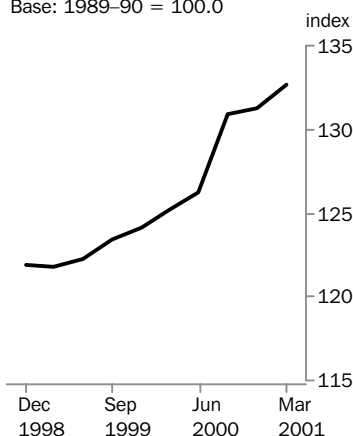
CONSUMER PRICE INDEX AUSTRALIA

EMBARGO: 11:30AM (CANBERRA TIME) TUES 24 APR 2001

MARCH QTR KEY FIGURES

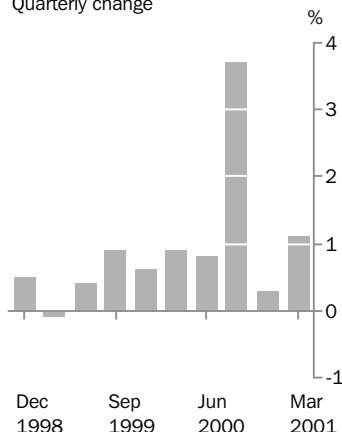
All Groups

Base: 1989-90 = 100.0



All Groups

Quarterly change



	% change Dec Qtr 2000 to Mar Qtr 2001	% change Mar Qtr 2000 to Mar Qtr 2001
Weighted average of eight capital cities		
Food	3.1	6.6
Alcohol and tobacco	2.6	11.3
Clothing and footwear	-2.1	5.6
Housing	0.5	7.4
Household furnishings, supplies and services	0.8	3.9
Health	2.8	3.9
Transportation	0.2	5.1
Communication	-0.5	7.1
Recreation	-0.1	3.6
Education	4.2	4.5
Miscellaneous	1.0	7.3
All groups	1.1	6.0
All groups excluding Housing	1.2	5.6

MARCH QTR KEY POINTS

THE ALL GROUPS CPI

- rose 1.1% in the March quarter 2001, up from 0.3% in the December quarter 2000.
- rose 6.0% between the March quarters 2000 and 2001.

OVERVIEW OF CPI MOVEMENTS

- contributing most to the overall increase this quarter were rises in the cost of vegetables (+20.0%), motor vehicles (+1.9%), tobacco (+3.9%), pharmaceuticals (+9.3%), fruit (+6.1%), motor vehicle repair and servicing (+2.8%), beer (+2.1%), secondary education (+6.3%), rents (+0.9%) and soft drinks, waters and juices (+3.8%).
- partially offsetting the above were falls in the cost of automotive fuel (-3.7%), domestic holiday travel and accommodation (-5.2%), women's outerwear (-4.7%) and men's outerwear (-2.8%).

- For further information about these and related statistics, contact Steve Whennan on Canberra 02 6252 6251, or the National Information Service on 1300 135 070.

NOTES

FORTHCOMING ISSUES

ISSUE

RELEASE DATE

June 2001

25 July 2001

September 2001

24 October 2001

.....

CHANGES IN THIS ISSUE

There are no changes in this issue.

.....

ROUNDING

Any discrepancies between totals and sums of components in this publication are due to rounding. For similar reasons quarterly movements shown by sub-group or group index numbers in Table 7 do not necessarily correspond exactly with those shown by the relevant index points.

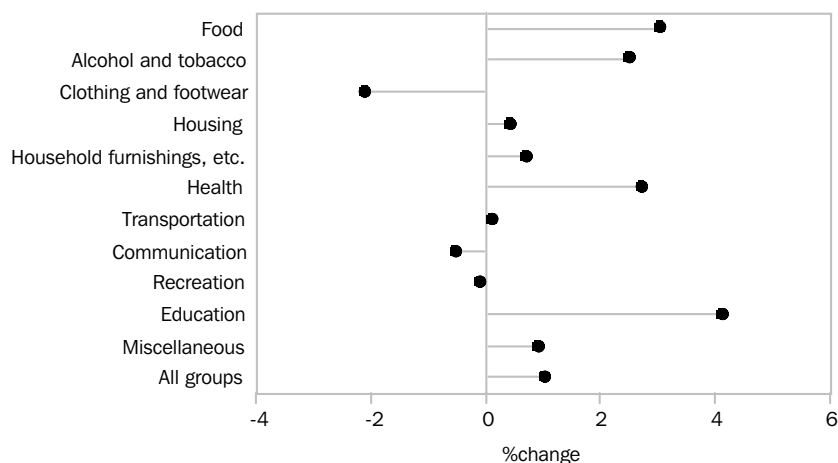
.....

R.W. Edwards

Acting Australian Statistician

ANALYSES AND COMMENTS

CPI GROUPS, WEIGHTED AVERAGE OF EIGHT CAPITAL CITIES: PERCENTAGE CHANGE FROM PREVIOUS QUARTER



MAIN CONTRIBUTIONS TO CHANGE

The discussion of the CPI groups below is ordered in terms of their significance to the change in All groups index points (see Table 6).

FOOD (+3.1%)

The rise in food costs this quarter was mainly attributable to increases in the price of vegetables (+20.0%), fruit (+6.1%), soft drinks, waters and juices (+3.8%), bread (+2.8%), beef and veal (+4.7%) and take away and fast foods (+0.7%). There were no significant falls. The 3.1% increase in food costs in the March quarter 2001 was the highest quarterly increase since the June quarter 1989.

Annually, food costs rose 6.6%.

ALCOHOL AND TOBACCO (+2.6%)

The rise in alcohol and tobacco costs this quarter was due to increases in the price of tobacco (+3.9%), beer (+2.1%), wine (+1.6%) and spirits (+2.1%). These increases were mainly due to the increase in the rates of excise and customs duties from 1 February 2001. There were no falls.

Annually, the cost of alcohol and tobacco rose 11.3%.

HEALTH (+2.8%)

The rise in health costs this quarter was mainly due to increases in pharmaceuticals (+9.3%) and hospital and medical services (+0.6%). The increase in pharmaceuticals was largely due to a reduction in the negative effect on prices of the Pharmaceutical Benefits Scheme's safety net that occurs at the start of each calendar year. There were no falls.

Annually, health costs rose 3.9%.

CLOTHING AND FOOTWEAR (-2.1%)

The fall in clothing and footwear costs this quarter was due to decreases in most categories, in particular women's outerwear (-4.7%), men's outerwear (-2.8%), children's and infants' clothing (-2.7%) and clothing accessories and jewellery (-1.3%). There were no significant increases.

Annually, clothing and footwear costs rose 5.6%.

ANALYSES AND COMMENTS

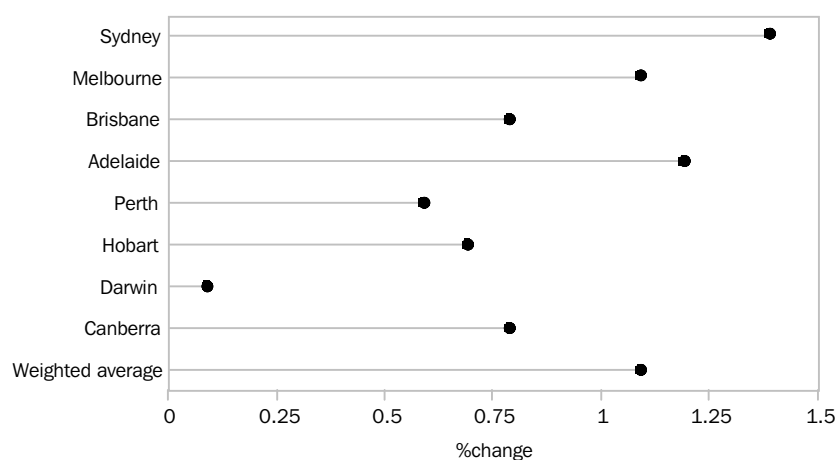
MAIN CONTRIBUTIONS TO CHANGE *continued*

EDUCATION (+4.2%)	<p>All categories of education recorded the cyclical increase normally associated with the commencement of the new school year in the March quarter. Secondary education rose 6.3%, tertiary education rose 2.6% and preschool and primary education rose 4.4%. Annually, education costs rose 4.5%.</p>
HOUSING (+0.5%)	<p>The rise in housing costs this quarter was mainly due to increases in rents (+0.9%), house repairs and maintenance (+1.1%) and house purchase (+0.2%). There were no significant falls.</p> <p>Annually, housing costs rose 7.4%.</p>
HOUSEHOLD FURNISHINGS, SUPPLIES AND SERVICES (+0.8%)	<p>The rise in household furnishings, supplies and services costs this quarter was mainly attributable to increases in other household supplies (+1.4%), major household appliances (+2.3%) and household cleaning agents (+1.9%). These increases were partially offset by a small fall in furniture (−0.2%).</p> <p>Annually, household furnishings, supplies and services costs rose 3.9%.</p>
TRANSPORTATION (+0.2%)	<p>The rise in transportation costs this quarter was mainly due to increases in motor vehicles (+1.9%), motor vehicle repair and servicing (+2.8%), motor vehicle parts and accessories (+1.6%) and urban transport fares (+1.7%). These increases were partially offset by a fall in automotive fuel prices (−3.7%), the first decrease since the March quarter 1999. Petrol prices fell in October (−0.2%) and November (−2.4%), rose in December 2000 (+1.0%), then fell in January 2001 (−8.4%) before rising in February (+7.7%) and March (+0.7%).</p> <p>Annually, transportation costs rose 5.1%.</p>
MISCELLANEOUS (+1.0%)	<p>The rise in miscellaneous costs this quarter was mainly due to increases in insurance services (+1.7%) and child care (+4.7%). These increases were partially offset by a small fall in toiletries and personal care products (−0.5%).</p> <p>Annually, miscellaneous costs rose 7.3%.</p>

ANALYSES AND COMMENTS

CAPITAL CITIES COMPARISON

ALL GROUPS: PERCENTAGE CHANGE FROM PREVIOUS QUARTER



At the All groups level, the March quarter 2001 CPI rose in each of the eight capital cities. Sydney (+1.4%) recorded the highest increase, while Darwin (+0.1%) recorded the lowest.

The low result in Darwin was mainly due to that capital city recording the lowest or equal lowest increases for the quarter in food, housing, health, recreation and education.

Over the 12 months to March quarter 2001, the All groups CPI rose in each of the eight capital cities. The increases ranged from 5.1% in Darwin to 6.5% in Sydney.

CPI, All groups index numbers(a) and percentage changes

	INDEX NUMBER(a)	PERCENTAGE CHANGE BETWEEN	
		Mar Qtr 2001	Dec Qtr 2000 and Mar Qtr 2001 Mar Qtr 2000 and Mar Qtr 2001
Sydney	134.0	1.4	6.5
Melbourne	132.2	1.1	6.0
Brisbane	132.7	0.8	5.7
Adelaide	134.1	1.2	5.8
Perth	129.6	0.6	5.3
Hobart	132.1	0.7	5.4
Darwin	130.7	0.1	5.1
Canberra	132.2	0.8	5.8
Weighted average of eight capital cities	132.7	1.1	6.0

(a) Base of each index: 1989-90 = 100.0

ALL GROUPS, Index Numbers(a)

Period	Sydney	Melbourne	Brisbane	Adelaide	Perth	Hobart	Darwin	Canberra	Weighted average of eight capital cities
1996-1997	120.4	119.9	121.0	122.3	118.3	121.4	121.6	121.2	120.3
1997-1998	120.5	119.8	121.6	121.6	118.0	121.3	121.3	120.4	120.3
1998-1999	122.5	120.9	122.9	123.2	120.1	122.5	122.4	121.5	121.8
1999-2000	125.4	124.1	125.0	126.3	122.9	124.8	124.2	124.2	124.7
1997									
March	120.6	120.1	121.5	122.6	118.2	121.9	121.6	121.4	120.5
June	120.2	119.9	121.1	121.9	118.1	121.3	121.5	120.4	120.2
September	119.8	119.5	120.7	121.2	117.5	120.6	121.0	119.8	119.7
December	120.1	119.8	121.4	121.2	117.6	121.2	120.8	119.8	120.0
1998									
March	120.7	119.6	121.9	121.7	118.0	121.5	121.5	120.6	120.3
June	121.4	120.3	122.3	122.4	118.9	122.0	121.8	121.2	121.0
September	121.9	120.4	122.5	123.0	119.6	122.8	122.1	121.3	121.3
December	122.4	120.8	123.0	123.6	120.2	122.7	122.7	121.7	121.9
1999									
March	122.6	121.0	122.8	122.7	119.8	122.1	122.1	121.4	121.8
June	123.0	121.5	123.1	123.6	120.8	122.5	122.7	121.5	122.3
September	124.1	122.7	124.0	125.1	121.9	123.3	122.9	122.4	123.4
December	124.7	123.5	124.1	125.7	122.7	124.0	123.6	123.7	124.1
2000									
March	125.8	124.7	125.5	126.8	123.1	125.3	124.4	124.9	125.2
June	127.0	125.6	126.4	127.6	124.0	126.5	125.7	125.9	126.2
September	131.6	130.4	131.3	132.3	128.6	131.3	130.0	130.7	130.9
December	132.2	130.8	131.6	132.5	128.8	131.2	130.6	131.1	131.3
2001									
March	134.0	132.2	132.7	134.1	129.6	132.1	130.7	132.2	132.7

(a) Base of each index: 1989-90 = 100.0

ALL GROUPS, Percentage Changes

Period	Sydney	Melbourne	Brisbane	Adelaide	Perth	Hobart	Darwin	Canberra	Weighted average of eight capital cities
PERCENTAGE CHANGE (from previous financial year)									
1996-1997	1.4	1.3	1.6	0.9	1.4	1.5	1.8	0.7	1.3
1997-1998	0.1	-0.1	0.5	-0.6	-0.3	-0.1	-0.2	-0.7	0.0
1998-1999	1.7	0.9	1.1	1.3	1.8	1.0	0.9	0.9	1.2
1999-2000	2.4	2.6	1.7	2.5	2.3	1.9	1.5	2.2	2.4
PERCENTAGE CHANGE (from corresponding quarter of previous year)									
1997									
March	1.3	1.5	1.6	0.8	0.9	1.5	1.5	0.5	1.3
June	0.3	0.6	0.6	-0.1	0.2	0.6	0.6	-0.8	0.3
September	-0.3	-0.1	0.1	-0.8	-0.7	-0.4	-0.5	-1.3	-0.3
December	-0.2	-0.1	0.5	-1.1	-0.7	-0.1	-0.7	-1.3	-0.2
1998									
March	0.1	-0.4	0.3	-0.7	-0.2	-0.3	-0.1	-0.7	-0.2
June	1.0	0.3	1.0	0.4	0.7	0.6	0.2	0.7	0.7
September	1.8	0.8	1.5	1.5	1.8	1.8	0.9	1.3	1.3
December	1.9	0.8	1.3	2.0	2.2	1.2	1.6	1.6	1.6
1999									
March	1.6	1.2	0.7	0.8	1.5	0.5	0.5	0.7	1.2
June	1.3	1.0	0.7	1.0	1.6	0.4	0.7	0.2	1.1
September	1.8	1.9	1.2	1.7	1.9	0.4	0.7	0.9	1.7
December	1.9	2.2	0.9	1.7	2.1	1.1	0.7	1.6	1.8
2000									
March	2.6	3.1	2.2	3.3	2.8	2.6	1.9	2.9	2.8
June	3.3	3.4	2.7	3.2	2.6	3.3	2.4	3.6	3.2
September	6.0	6.3	5.9	5.8	5.5	6.5	5.8	6.8	6.1
December	6.0	5.9	6.0	5.4	5.0	5.8	5.7	6.0	5.8
2001									
March	6.5	6.0	5.7	5.8	5.3	5.4	5.1	5.8	6.0
PERCENTAGE CHANGE (from previous quarter)									
1997									
March	0.2	0.2	0.6	0.0	-0.2	0.5	-0.1	0.0	0.2
June	-0.3	-0.2	-0.3	-0.6	-0.1	-0.5	-0.1	-0.8	-0.2
September	-0.3	-0.3	-0.3	-0.6	-0.5	-0.6	-0.4	-0.5	-0.4
December	0.3	0.3	0.6	0.0	0.1	0.5	-0.2	0.0	0.3
1998									
March	0.5	-0.2	0.4	0.4	0.3	0.2	0.6	0.7	0.3
June	0.6	0.6	0.3	0.6	0.8	0.4	0.2	0.5	0.6
September	0.4	0.1	0.2	0.5	0.6	0.7	0.2	0.1	0.2
December	0.4	0.3	0.4	0.5	0.5	-0.1	0.5	0.3	0.5
1999									
March	0.2	0.2	-0.2	-0.7	-0.3	-0.5	-0.5	-0.2	-0.1
June	0.3	0.4	0.2	0.7	0.8	0.3	0.5	0.1	0.4
September	0.9	1.0	0.7	1.2	0.9	0.7	0.2	0.7	0.9
December	0.5	0.7	0.1	0.5	0.7	0.6	0.6	1.1	0.6
2000									
March	0.9	1.0	1.1	0.9	0.3	1.0	0.6	1.0	0.9
June	1.0	0.7	0.7	0.6	0.7	1.0	1.0	0.8	0.8
September	3.6	3.8	3.9	3.7	3.7	3.8	3.4	3.8	3.7
December	0.5	0.3	0.2	0.2	0.2	-0.1	0.5	0.3	0.3
2001									
March	1.4	1.1	0.8	1.2	0.6	0.7	0.1	0.8	1.1

CPI GROUPS, Weighted Average of Eight Capital Cities—Index Numbers(a)

<i>Period</i>	<i>Food</i>	<i>Alcohol and tobacco</i>	<i>Clothing and footwear</i>	<i>Housing</i>	<i>Household furnishings, supplies and services</i>	<i>Health</i>
1996-1997	119.7	161.4	107.3	101.6	113.5	159.7
1997-1998	121.8	164.6	107.4	94.5	113.8	165.4
1998-1999	126.5	168.7	106.7	95.8	113.7	163.4
1999-2000	129.2	175.2	105.5	99.9	113.3	158.7
1997						
March	120.2	161.7	107.0	100.2	113.5	161.8
June	120.8	162.1	107.3	96.9	113.9	166.4
September	120.8	161.9	107.1	95.9	113.4	158.5
December	121.1	164.3	107.8	94.2	113.8	164.6
1998						
March	122.1	165.4	107.4	93.4	113.8	167.1
June	123.1	166.7	107.3	94.5	114.0	171.4
September	124.7	167.5	107.0	94.8	113.9	172.4
December	126.0	167.9	106.9	95.5	114.1	171.3
1999						
March	127.5	169.2	106.3	96.2	113.0	154.6
June	127.8	170.3	106.7	96.6	113.6	155.2
September	128.5	170.8	106.2	98.1	113.0	156.8
December	128.9	174.2	105.2	99.6	113.3	156.5
2000						
March	129.1	177.1	104.8	100.7	112.8	160.2
June	130.2	178.6	105.7	101.2	114.1	161.3
September	132.4	190.2	113.5	107.4	116.4	162.1
December	133.4	192.1	113.1	107.7	116.3	161.9
2001						
March	137.6	197.1	110.7	108.2	117.2	166.4

CPI GROUPS, Weighted Average of Eight Capital Cities—Index Numbers *continued*

<i>Period</i>	<i>Transportation</i>	<i>Communication</i>	<i>Recreation</i>	<i>Education</i>	<i>Miscellaneous</i>	<i>All groups</i>
1996-1997	124.3	106.5	115.0	156.0	133.4	120.3
1997-1998	123.5	106.6	117.8	165.6	138.5	120.3
1998-1999	122.1	102.9	119.4	174.1	143.5	121.8
1999-2000	128.9	97.8	120.4	182.4	153.2	124.7
1997						
March	125.2	106.4	115.8	160.8	134.2	120.5
June	123.9	106.4	115.5	160.8	135.9	120.2
September	124.4	106.5	116.7	160.8	137.0	119.7
December	124.0	106.8	117.1	160.8	138.1	120.0
1998						
March	122.9	106.8	118.6	170.3	138.8	120.3
June	122.8	106.1	118.7	170.3	140.0	121.0
September	122.3	105.2	118.1	170.3	142.1	121.3
December	121.9	104.1	119.3	170.3	143.0	121.9
1999						
March	121.2	101.2	120.2	177.8	144.0	121.8
June	122.9	100.9	119.8	177.8	145.0	122.3
September	126.9	97.7	120.4	177.8	147.1	123.4
December	126.4	97.3	121.0	177.8	150.2	124.1
2000						
March	130.1	97.5	120.2	187.0	155.3	125.2
June	132.1	98.8	120.0	187.0	160.3	126.2
September	135.6	105.6	124.8	187.3	163.5	130.9
December	136.4	104.9	124.6	187.5	165.0	131.3
2001						
March	136.7	104.4	124.5	195.4	166.7	132.7

(a) Base of each index: 1989-90 = 100.0

CPI GROUPS, Weighted Average of Eight Capital Cities—Percentage Changes

<i>Period</i>	<i>Food</i>	<i>Alcohol and tobacco</i>	<i>Clothing and footwear</i>	<i>Housing</i>	<i>Household furnishings, supplies and services</i>	<i>Health</i>
---------------	-------------	------------------------------------	--------------------------------------	----------------	---	---------------

PERCENTAGE CHANGE (from previous financial year)

1996-1997	3.2	3.4	0.3	-4.1	1.6	6.3
1997-1998	1.8	2.0	0.1	-7.0	0.3	3.6
1998-1999	3.9	2.5	-0.7	1.4	-0.1	-1.2
1999-2000	2.1	3.9	-1.1	4.3	-0.4	-2.9

PERCENTAGE CHANGE (from corresponding quarter of previous year)

1997						
March	3.7	2.5	0.2	-5.2	1.7	6.1
June	3.2	1.4	-0.1	-8.8	1.2	9.0
September	2.1	0.9	-0.1	-9.6	0.3	2.9
December	1.4	1.9	0.3	-8.7	0.2	5.2
1998						
March	1.6	2.3	0.4	-6.8	0.3	3.3
June	1.9	2.8	0.0	-2.5	0.1	3.0
September	3.2	3.5	-0.1	-1.1	0.4	8.8
December	4.0	2.2	-0.8	1.4	0.3	4.1
1999						
March	4.4	2.3	-1.0	3.0	-0.7	-7.5
June	3.8	2.2	-0.6	2.2	-0.4	-9.5
September	3.0	2.0	-0.7	3.5	-0.8	-9.0
December	2.3	3.8	-1.6	4.3	-0.7	-8.6
2000						
March	1.3	4.7	-1.4	4.7	-0.2	3.6
June	1.9	4.9	-0.9	4.8	0.4	3.9
September	3.0	11.4	6.9	9.5	3.0	3.4
December	3.5	10.3	7.5	8.1	2.6	3.5
2001						
March	6.6	11.3	5.6	7.4	3.9	3.9

PERCENTAGE CHANGE (from previous quarter)

1997						
March	0.7	0.3	-0.5	-2.9	-0.1	3.5
June	0.5	0.2	0.3	-3.3	0.4	2.8
September	0.0	-0.1	-0.2	-1.0	-0.4	-4.7
December	0.2	1.5	0.7	-1.8	0.4	3.8
1998						
March	0.8	0.7	-0.4	-0.8	0.0	1.5
June	0.8	0.8	-0.1	1.2	0.2	2.6
September	1.3	0.5	-0.3	0.3	-0.1	0.6
December	1.0	0.2	-0.1	0.7	0.2	-0.6
1999						
March	1.2	0.8	-0.6	0.7	-1.0	-9.7
June	0.2	0.7	0.4	0.4	0.5	0.4
September	0.5	0.3	-0.5	1.6	-0.5	1.0
December	0.3	2.0	-0.9	1.5	0.3	-0.2
2000						
March	0.2	1.7	-0.4	1.1	-0.4	2.4
June	0.9	0.8	0.9	0.5	1.2	0.7
September	1.7	6.5	7.4	6.1	2.0	0.5
December	0.8	1.0	-0.4	0.3	-0.1	-0.1
2001						
March	3.1	2.6	-2.1	0.5	0.8	2.8

Period	Transportation	Communication	Recreation	Education	Miscellaneous	All groups
--------	----------------	---------------	------------	-----------	---------------	------------

PERCENTAGE CHANGE (from previous financial year)

1996-1997	1.4	-0.7	0.7	6.1	4.2	1.3
1997-1998	-0.6	0.1	2.4	6.2	3.8	0.0
1998-1999	-1.1	-3.5	1.4	5.1	3.6	1.2
1999-2000	5.6	-5.0	0.8	4.8	6.8	2.4

PERCENTAGE CHANGE (from corresponding quarter of previous year)

1997						
March	2.3	-0.4	0.5	6.4	4.0	1.3
June	0.1	-0.3	1.3	6.4	4.6	0.3
September	0.8	-0.2	2.4	6.4	4.5	-0.3
December	-0.4	0.5	2.1	6.4	4.3	-0.2
1998						
March	-1.8	0.4	2.4	5.9	3.4	-0.2
June	-0.9	-0.3	2.8	5.9	3.0	0.7
September	-1.7	-1.2	1.2	5.9	3.7	1.3
December	-1.7	-2.5	1.9	5.9	3.5	1.6
1999						
March	-1.4	-5.2	1.3	4.4	3.7	1.2
June	0.1	-4.9	0.9	4.4	3.6	1.1
September	3.8	-7.1	1.9	4.4	3.5	1.7
December	3.7	-6.5	1.4	4.4	5.0	1.8
2000						
March	7.3	-3.7	0.0	5.2	7.8	2.8
June	7.5	-2.1	0.2	5.2	10.6	3.2
September	6.9	8.1	3.7	5.3	11.1	6.1
December	7.9	7.8	3.0	5.5	9.9	5.8
2001						
March	5.1	7.1	3.6	4.5	7.3	6.0

PERCENTAGE CHANGE (from previous quarter)

1997						
March	0.6	0.1	1.0	6.4	1.4	0.2
June	-1.0	0.0	-0.3	0.0	1.3	-0.2
September	0.4	0.1	1.0	0.0	0.8	-0.4
December	-0.3	0.3	0.3	0.0	0.8	0.3
1998						
March	-0.9	0.0	1.3	5.9	0.5	0.3
June	-0.1	-0.7	0.1	0.0	0.9	0.6
September	-0.4	-0.8	-0.5	0.0	1.5	0.2
December	-0.3	-1.0	1.0	0.0	0.6	0.5
1999						
March	-0.6	-2.8	0.8	4.4	0.7	-0.1
June	1.4	-0.3	-0.3	0.0	0.7	0.4
September	3.3	-3.2	0.5	0.0	1.4	0.9
December	-0.4	-0.4	0.5	0.0	2.1	0.6
2000						
March	2.9	0.2	-0.7	5.2	3.4	0.9
June	1.5	1.3	-0.2	0.0	3.2	0.8
September	2.6	6.9	4.0	0.2	2.0	3.7
December	0.6	-0.7	-0.2	0.1	0.9	0.3
2001						
March	0.2	-0.5	-0.1	4.2	1.0	1.1

CPI GROUPS, Index Numbers(a)

Quarters	Sydney	Melbourne	Brisbane	Adelaide	Perth	Hobart	Darwin	Canberra	Weighted average of eight capital cities
FOOD									
1999									
March	129.1	125.8	126.4	128.0	128.4	125.5	125.6	129.0	127.5
June	128.7	126.7	126.3	128.8	129.6	126.8	126.7	128.3	127.8
September	129.4	127.8	127.0	129.7	129.4	126.3	124.3	127.7	128.5
December	129.6	128.6	126.4	130.4	129.3	127.5	125.9	130.9	128.9
2000									
March	129.6	128.3	127.5	131.2	130.4	127.8	127.4	130.6	129.1
June	130.7	130.0	129.1	131.9	129.7	129.1	130.0	131.1	130.2
September	133.4	131.6	131.4	133.8	132.9	130.9	131.1	134.1	132.4
December	134.6	132.8	131.9	134.2	132.7	132.0	132.5	135.9	133.4
2001									
March	139.2	136.8	137.1	139.4	135.2	134.3	134.8	139.4	137.6
ALCOHOL AND TOBACCO									
1999									
March	173.9	167.6	169.5	171.8	159.4	161.5	162.1	164.2	169.2
June	175.0	169.1	169.8	173.3	161.5	160.0	163.0	163.2	170.3
September	175.4	169.4	170.6	174.4	161.8	158.1	163.2	162.9	170.8
December	178.5	173.7	173.4	177.8	164.6	163.3	166.6	165.1	174.2
2000									
March	181.3	176.5	176.8	181.6	166.9	167.2	169.6	169.5	177.1
June	183.2	177.3	177.8	182.5	169.5	169.9	171.5	170.3	178.6
September	195.9	187.6	190.8	193.4	179.8	179.8	182.6	182.3	190.2
December	198.2	189.1	192.0	196.0	182.7	181.6	183.2	183.7	192.1
2001									
March	203.3	194.8	195.5	200.5	187.7	185.4	186.8	187.6	197.1
CLOTHING AND FOOTWEAR									
1999									
March	106.9	107.5	104.6	103.7	104.6	104.7	103.7	107.2	106.3
June	106.7	107.8	105.2	105.7	105.3	104.6	102.8	107.2	106.7
September	106.1	107.5	104.7	104.8	105.1	104.5	103.3	107.2	106.2
December	105.2	107.1	103.2	102.5	103.6	103.9	103.0	106.2	105.2
2000									
March	105.0	106.9	102.6	101.9	102.5	104.9	101.1	105.5	104.8
June	106.0	106.9	102.9	104.0	105.6	105.0	102.0	106.9	105.7
September	112.5	116.2	110.4	113.6	112.7	112.8	108.4	113.7	113.5
December	113.3	115.4	109.7	111.2	111.0	112.9	108.0	114.0	113.1
2001									
March	112.3	112.5	102.9	110.5	108.6	110.7	103.6	112.9	110.7
HOUSING									
1999									
March	103.8	87.3	101.6	92.2	90.6	95.8	116.0	94.3	96.2
June	104.3	87.5	102.0	92.8	91.3	95.9	116.9	94.7	96.6
September	105.8	88.8	102.8	95.0	93.1	96.9	117.4	96.0	98.1
December	107.3	90.4	103.9	96.9	95.1	97.4	117.8	97.2	99.6
2000									
March	108.6	91.7	105.1	97.9	95.1	98.8	117.5	99.0	100.7
June	109.6	91.7	105.4	98.3	95.4	99.2	118.2	100.6	101.2
September	115.8	97.8	112.0	103.9	101.3	105.5	123.9	106.7	107.4
December	116.1	98.3	112.7	103.9	101.3	105.8	123.9	107.1	107.7
2001									
March	116.5	99.1	112.8	104.4	101.1	106.9	123.3	108.0	108.2

Quarters	Sydney	Melbourne	Brisbane	Adelaide	Perth	Hobart	Darwin	Canberra	Weighted average of eight capital cities
HOUSEHOLD FURNISHINGS, SUPPLIES AND SERVICES									
1999									
March	110.4	114.7	116.0	112.3	112.7	119.5	105.3	115.4	113.0
June	111.2	115.1	115.8	113.2	113.3	119.4	105.9	116.3	113.6
September	110.7	114.3	115.2	112.5	113.0	119.3	105.7	115.7	113.0
December	111.2	114.4	114.9	112.7	113.5	119.1	106.7	116.9	113.3
2000									
March	110.5	114.3	114.4	112.9	112.4	120.2	106.8	116.0	112.8
June	112.0	115.7	115.6	113.4	113.6	121.2	107.5	117.7	114.1
September	114.0	117.9	119.0	116.0	114.7	124.5	109.5	120.9	116.4
December	114.3	117.1	119.4	115.8	115.3	124.6	110.4	120.3	116.3
2001									
March	115.5	117.8	120.7	117.4	114.5	125.6	110.6	121.7	117.2
HEALTH									
1999									
March	144.9	165.2	149.4	163.9	148.8	164.9	144.7	148.5	154.6
June	145.5	166.0	150.0	164.5	148.9	165.7	145.0	149.3	155.2
September	147.9	166.0	150.9	164.5	151.4	173.3	145.9	152.1	156.8
December	148.0	165.9	150.5	163.7	150.5	172.0	145.8	152.0	156.5
2000									
March	152.0	170.2	153.9	166.3	153.5	175.1	147.7	155.9	160.2
June	152.7	170.9	155.0	167.9	154.8	177.7	149.5	157.9	161.3
September	153.4	171.9	156.0	168.5	155.5	178.0	151.3	158.1	162.1
December	153.0	172.8	155.7	167.6	154.7	177.4	152.4	157.1	161.9
2001									
March	157.2	177.8	160.4	170.7	158.7	181.5	154.9	162.5	166.4
TRANSPORTATION									
1999									
March	122.5	119.9	120.5	120.9	121.1	118.4	119.1	126.5	121.2
June	124.2	121.6	121.8	122.4	123.2	120.4	119.3	128.2	122.9
September	127.9	125.9	125.5	127.8	127.4	123.1	122.6	131.6	126.9
December	127.3	125.2	124.8	127.4	127.0	123.8	123.2	131.4	126.4
2000									
March	131.1	129.2	128.5	130.4	130.4	126.6	126.2	135.3	130.1
June	133.5	131.2	130.5	131.9	131.7	129.3	129.3	136.4	132.1
September	136.7	134.5	134.6	136.8	136.0	133.3	130.6	138.6	135.6
December	138.0	135.6	134.1	137.6	136.3	130.4	131.1	139.3	136.4
2001									
March	138.4	136.2	134.5	137.0	136.0	131.4	131.9	138.8	136.7
COMMUNICATION									
1999									
March	101.2	101.3	103.2	100.2	100.8	100.5	95.0	100.3	101.2
June	100.9	101.0	103.0	100.0	100.4	100.4	94.8	100.1	100.9
September	97.5	97.5	100.2	97.7	96.6	98.3	91.4	97.1	97.7
December	97.3	97.1	99.9	97.2	96.0	97.9	91.1	97.0	97.3
2000									
March	97.7	97.2	100.2	97.0	95.8	98.0	91.1	97.2	97.5
June	98.9	98.5	101.5	98.7	97.1	99.5	92.0	98.3	98.8
September	105.8	105.4	108.6	105.5	103.7	106.3	98.3	105.1	105.6
December	105.1	104.6	108.0	105.0	102.8	105.8	97.6	104.4	104.9
2001									
March	104.5	104.3	107.4	104.3	102.2	105.2	97.1	103.9	104.4

CPI GROUPS, Index Numbers(a) *continued*

Quarters	Sydney	Melbourne	Brisbane	Adelaide	Perth	Hobart	Darwin	Canberra	Weighted average of eight capital cities
RECREATION									
1999									
March	119.3	122.8	120.9	118.6	117.7	118.7	110.5	117.8	120.2
June	119.2	121.3	120.8	118.9	118.1	118.3	110.4	116.2	119.8
September	119.9	122.3	121.0	119.7	118.0	119.0	110.8	117.6	120.4
December	121.0	122.6	121.5	119.7	119.5	119.0	109.2	118.9	121.0
2000									
March	119.7	122.7	121.0	118.5	116.2	118.6	108.3	118.2	120.2
June	119.7	122.4	120.3	118.6	117.4	118.5	107.3	117.9	120.0
September	124.7	127.8	124.6	122.7	120.9	124.1	112.7	122.9	124.8
December	124.2	127.4	124.9	123.4	121.1	123.3	113.9	122.0	124.6
2001									
March	125.2	126.1	124.5	123.0	122.0	120.9	110.2	120.3	124.5
EDUCATION									
1999									
March	174.1	171.5	196.4	210.8	176.4	198.8	148.1	175.7	177.8
June	174.1	171.5	196.4	210.8	176.4	198.8	148.1	175.7	177.8
September	174.1	171.5	196.4	210.8	176.4	198.8	148.1	175.7	177.8
December	174.1	171.5	196.4	210.8	176.4	198.8	148.1	175.7	177.8
2000									
March	184.9	179.4	205.5	220.7	187.5	206.2	153.1	181.5	187.0
June	184.9	179.4	205.5	220.7	187.5	206.2	153.1	181.5	187.0
September	185.3	179.7	205.8	220.9	187.5	206.5	153.1	181.8	187.3
December	185.6	179.8	205.8	220.9	187.5	206.5	153.1	181.8	187.5
2001									
March	194.2	187.6	213.2	230.9	193.5	215.1	157.2	188.4	195.4
MISCELLANEOUS									
1999									
March	147.5	136.3	150.6	143.1	146.0	143.9	134.1	163.3	144.0
June	148.7	137.4	151.3	142.6	147.7	143.9	136.1	164.3	145.0
September	150.7	139.7	153.7	143.2	149.9	147.2	139.3	167.3	147.1
December	152.9	143.3	156.7	147.4	154.0	150.7	142.8	172.1	150.2
2000									
March	159.1	147.8	163.0	150.6	157.2	153.6	145.8	178.2	155.3
June	165.0	153.4	167.2	153.9	160.6	157.4	149.2	182.1	160.3
September	167.3	159.3	166.6	157.8	161.7	162.4	154.7	188.6	163.5
December	169.4	159.4	168.1	158.3	164.7	163.6	156.9	192.7	165.0
2001									
March	172.3	160.2	168.4	159.9	166.8	164.5	159.0	194.8	166.7

(a) Base of each index: 1989-90 = 100.0

CONTRIBUTION TO CHANGE IN ALL GROUPS INDEXES—Mar Qtr 2001(a)

Group, sub-group and expenditure class	Sydney	Melbourne	Brisbane	Adelaide	Perth	Hobart	Darwin	Canberra	Weighted average of eight capital cities
Food	0.78	0.72	0.90	0.92	0.41	0.40	0.39	0.55	0.73
Dairy and related products	0.02	—	0.03	0.03	0.02	—	-0.01	0.03	0.01
Milk	0.01	—	—	0.02	0.01	—	—	0.03	—
Cheese	—	0.01	—	—	—	—	-0.01	—	—
Ice cream and other dairy products	0.01	0.01	0.02	0.02	0.01	—	—	0.01	0.01
Bread and cereal products	0.08	0.04	0.07	0.07	0.05	0.07	0.03	0.08	0.06
Bread	0.03	0.03	0.03	0.03	0.03	0.05	0.01	0.07	0.03
Cakes and biscuits	0.03	0.01	0.02	0.03	0.02	0.02	0.01	0.01	0.02
Breakfast cereals	0.02	-0.01	0.01	0.01	-0.01	—	0.01	0.01	0.01
Other cereal products	0.01	0.01	0.01	—	—	—	0.01	0.01	0.01
Meat and seafoods	0.13	0.19	0.10	0.14	0.06	0.07	0.03	0.13	0.14
Beef and veal	0.02	0.04	0.04	0.02	0.02	0.03	0.04	0.02	0.03
Lamb and mutton	0.01	0.03	0.02	0.02	0.01	0.01	—	0.03	0.02
Pork	0.01	0.02	—	0.01	0.01	—	—	0.01	0.01
Poultry	0.04	0.03	0.03	0.02	—	0.02	-0.04	0.03	0.02
Bacon and ham	0.01	0.02	-0.01	0.01	—	0.01	—	0.02	0.01
Other fresh and processed meat	0.01	0.02	0.02	0.04	0.01	—	0.01	0.01	0.02
Fish and other seafood	0.01	0.01	—	0.02	0.03	0.01	0.01	0.01	0.01
Fruit and vegetables	0.40	0.36	0.62	0.56	0.13	0.27	0.40	0.27	0.39
Fruit	0.09	0.05	0.19	0.12	-0.01	0.13	0.09	0.07	0.08
Vegetables	0.31	0.31	0.43	0.45	0.13	0.14	0.31	0.19	0.31
Non-alcoholic drinks and snack food	0.09	0.05	0.08	0.10	0.06	—	-0.07	0.03	0.07
Soft drinks, waters and juices	0.08	0.05	0.07	0.07	0.05	—	-0.07	0.02	0.06
Snacks and confectionery	0.01	0.01	0.01	0.02	0.01	—	—	0.01	0.01
Meals out and take away foods	0.04	0.07	0.02	0.01	0.07	-0.03	0.01	0.03	0.04
Restaurant meals	—	0.03	0.01	0.01	0.02	0.02	-0.01	0.02	0.01
Take away and fast foods	0.04	0.02	0.01	—	0.05	-0.04	0.03	0.01	0.03
Other food	0.04	—	-0.03	0.01	0.03	0.01	-0.01	-0.03	0.01
Eggs	—	—	-0.01	0.01	0.01	0.01	0.01	—	—
Jams, honey and sandwich spreads	0.01	0.01	0.01	—	—	0.01	—	—	—
Tea, coffee and food drinks	—	—	-0.02	—	0.01	0.01	-0.02	-0.01	—
Food additives and condiments	—	—	-0.01	—	0.01	—	0.01	-0.01	0.01
Fats and oils	—	-0.01	—	—	—	—	0.01	-0.01	—
Food n.e.c.	0.02	-0.02	-0.01	-0.01	-0.01	—	-0.02	-0.01	—
Alcohol and tobacco	0.25	0.28	0.19	0.23	0.31	0.24	0.28	0.24	0.26
Alcoholic drinks	0.13	0.17	0.07	0.08	0.15	0.12	0.14	0.11	0.13
Beer	0.09	0.06	0.05	0.01	0.08	0.08	0.13	0.04	0.07
Wine	0.02	0.08	—	0.04	0.02	0.03	0.01	0.03	0.04
Spirits	0.02	0.03	0.02	0.02	0.05	0.02	—	0.03	0.03
Tobacco	0.12	0.13	0.11	0.16	0.16	0.12	0.14	0.13	0.13
Clothing and footwear	-0.06	-0.17	-0.40	-0.06	-0.16	-0.14	-0.21	-0.07	-0.15
Men's clothing	-0.01	-0.02	-0.09	-0.02	-0.03	-0.05	0.03	—	-0.03
Men's outerwear	-0.02	-0.03	-0.06	-0.04	-0.03	-0.05	0.02	-0.01	-0.03
Men's underwear, nightwear and socks	0.01	—	-0.03	0.03	—	0.01	—	0.01	—
Women's clothing	-0.07	-0.11	-0.20	-0.01	-0.06	-0.08	-0.14	—	-0.09
Women's outerwear	-0.09	-0.11	-0.18	-0.04	-0.05	-0.06	-0.12	-0.01	-0.09
Women's underwear, nightwear and hosiery	0.02	—	-0.03	0.02	-0.01	-0.02	-0.02	-0.01	—
Children's and infants' clothing	-0.01	-0.01	-0.05	-0.04	-0.02	-0.03	-0.01	0.02	-0.02
Footwear	0.02	—	-0.03	-0.02	-0.01	—	-0.05	-0.08	—
Men's footwear	-0.01	—	-0.03	—	0.01	0.01	-0.01	-0.02	—
Women's footwear	0.02	—	0.01	-0.03	—	—	-0.02	-0.03	—
Children's footwear	0.01	—	-0.01	—	-0.01	—	-0.02	-0.03	—
Clothing accessories, supplies and services	—	-0.03	-0.02	0.03	-0.02	—	-0.01	—	-0.01
Clothing accessories and jewellery	—	-0.02	-0.01	0.03	-0.03	0.01	-0.01	0.01	-0.01
Fabrics and knitting wool	0.01	—	—	-0.01	0.01	—	-0.01	—	—
Clothing services and shoe repair	—	—	-0.01	0.01	—	—	—	0.01	—

Group, sub-group and expenditure class	Sydney	Melbourne	Brisbane	Adelaide	Perth	Hobart	Darwin	Canberra	Weighted average of eight capital cities
Housing	0.10	0.21	0.03	0.13	-0.04	0.24	-0.11	0.18	0.11
Rents	0.12	0.05	0.02	0.04	0.02	0.01	-0.03	0.09	0.06
Utilities	0.01	0.01	—	—	—	0.18	0.01	0.01	0.01
Electricity	0.02	0.01	—	0.01	—	0.18	—	—	0.01
Gas and other household fuels	-0.01	—	—	—	—	-0.01	—	0.01	—
Water and sewerage	-0.01	—	—	—	—	—	—	—	—
Other housing	-0.03	0.15	0.01	0.10	-0.05	0.05	-0.09	0.09	0.03
House purchase	-0.01	0.10	-0.03	0.06	-0.04	—	-0.07	0.03	0.02
Property rates and charges	-0.03	—	—	—	—	—	—	—	-0.01
House repairs and maintenance	0.02	0.04	0.04	0.04	-0.02	0.05	-0.02	0.06	0.03
Household furnishings, supplies and services	0.11	0.06	0.11	0.15	-0.06	0.09	0.02	0.13	0.08
Furniture and furnishings	0.04	-0.01	0.03	-0.03	-0.11	0.05	-0.07	0.03	—
Furniture	0.02	-0.03	0.02	0.01	-0.09	—	-0.06	0.02	-0.01
Floor and window coverings	0.01	0.01	0.02	-0.05	-0.01	0.01	0.02	—	—
Towels and linen	0.01	0.01	—	0.01	-0.01	0.04	-0.03	0.01	0.01
Household appliances, utensils and tools	0.01	0.04	0.05	0.08	0.04	0.03	0.04	0.03	0.04
Major household appliances	0.03	0.02	0.03	0.03	0.02	0.02	0.04	0.02	0.02
Small electric household appliances	—	—	—	0.01	0.01	—	0.01	—	—
Glassware, tableware and household utensils	-0.02	0.01	0.02	0.05	—	0.01	—	—	—
Tools	-0.01	0.01	0.01	—	0.01	—	-0.02	0.01	—
Household supplies	0.04	0.03	0.02	0.10	0.01	0.01	0.05	0.06	0.03
Household cleaning agents	0.01	0.01	—	0.02	—	—	0.02	—	0.01
Other household supplies	0.03	0.02	0.02	0.09	—	0.02	0.04	0.05	0.03
Household services	0.03	—	—	0.01	—	—	—	—	0.01
Health	0.17	0.17	0.17	0.12	0.14	0.18	0.07	0.19	0.16
Health services	0.03	0.04	0.03	0.01	0.03	0.02	0.02	0.06	0.04
Hospital and medical services	0.03	0.03	0.03	0.01	0.03	0.02	0.01	0.04	0.02
Optical services	—	—	—	—	—	—	—	0.01	—
Dental services	0.01	0.02	—	0.01	—	-0.01	0.01	0.01	0.01
Pharmaceuticals	0.14	0.12	0.14	0.12	0.11	0.15	0.07	0.14	0.12
Transportation	0.07	0.10	0.05	-0.08	-0.04	0.14	0.12	-0.08	0.05
Private motoring	0.06	0.03	0.05	-0.09	-0.04	0.12	0.12	-0.07	0.02
Motor vehicles	0.17	0.12	0.15	0.12	0.10	0.12	0.12	0.04	0.14
Automotive fuel	-0.24	-0.21	-0.21	-0.22	-0.23	-0.05	-0.23	-0.18	-0.22
Motor vehicle repair and servicing	0.08	0.09	0.09	0.01	0.07	0.03	0.18	0.05	0.08
Motor vehicle parts and accessories	0.02	0.02	—	0.01	0.02	0.02	0.05	0.02	0.03
Other motoring charges	0.02	—	—	—	—	—	—	—	0.01
Urban transport fares	—	0.07	—	—	—	0.02	-0.01	—	0.02
Communication	-0.02	-0.01	-0.02	-0.02	-0.02	-0.02	-0.02	-0.01	-0.02
Postal	—	—	—	—	—	—	—	—	—
Telecommunication	-0.01	-0.02	-0.03	-0.02	-0.02	-0.02	-0.03	-0.02	-0.02

Group, sub-group and expenditure class	Sydney	Melbourne	Brisbane	Adelaide	Perth	Hobart	Darwin	Canberra	Weighted average of eight capital cities
Recreation	0.11	-0.16	-0.05	-0.05	0.12	-0.35	-0.60	-0.26	-0.02
Audio, visual and computing	0.06	0.02	0.03	0.03	0.01	-0.05	0.07	0.01	0.03
Audio, visual and computing equipment	—	0.01	0.01	-0.02	-0.01	-0.01	0.03	—	—
Audio, visual and computing media and services	0.05	0.01	0.02	0.05	0.01	-0.03	0.03	0.01	0.03
Books, newspapers and magazines	0.05	—	—	-0.02	0.03	0.03	-0.01	-0.01	0.02
Books	0.03	—	-0.01	-0.02	0.02	0.01	-0.01	-0.02	0.01
Newspapers and magazines	0.02	0.01	—	—	0.01	0.02	—	0.01	0.01
Sport and other recreation	0.08	0.07	0.08	0.09	0.09	0.04	0.10	0.14	0.08
Sports and recreational equipment	0.01	—	0.01	0.02	—	0.01	0.04	-0.01	0.01
Toys, games and hobbies	0.04	0.03	0.02	0.03	0.02	0.01	0.02	0.07	0.03
Sports participation	0.01	0.01	0.01	-0.02	0.03	0.01	0.01	0.02	0.01
Pets, pet foods and supplies	0.02	0.01	0.02	—	0.01	—	0.01	0.02	0.01
Pet services including veterinary	0.01	0.01	—	0.01	—	—	0.01	—	—
Other recreational activities	0.01	0.02	0.01	0.05	0.03	0.01	0.01	0.05	0.02
Holiday travel and accommodation	-0.08	-0.25	-0.16	-0.16	-0.02	-0.37	-0.76	-0.40	-0.15
Domestic holiday travel and accommodation	-0.12	-0.20	-0.21	-0.22	-0.06	-0.45	-0.68	-0.46	-0.17
Overseas holiday travel and accommodation	0.03	-0.04	0.05	0.05	0.04	0.08	-0.08	0.06	0.02
Education	0.16	0.16	0.13	0.17	0.09	0.13	0.05	0.09	0.14
Preschool and primary education	0.02	0.04	0.03	0.04	0.01	0.02	—	0.01	0.03
Secondary education	0.06	0.09	0.09	0.09	0.05	0.06	—	0.05	0.07
Tertiary education	0.08	0.02	0.02	0.03	0.02	0.06	0.05	0.04	0.04
Miscellaneous	0.09	0.03	0.01	0.06	0.07	0.03	0.07	0.06	0.05
Insurance services	0.05	0.03	0.01	0.03	0.05	—	0.02	0.05	0.03
Personal care	0.02	-0.03	-0.04	0.02	—	0.01	-0.01	0.01	—
Hairdressing and personal care services	0.02	—	-0.02	0.02	—	0.01	—	0.01	0.01
Toiletries and personal care products	—	-0.03	-0.03	—	—	0.01	-0.01	—	-0.01
Child care	0.03	0.01	0.04	—	0.01	—	0.06	0.02	0.02
All groups	1.8	1.4	1.1	1.6	0.8	0.9	0.1	1.1	1.4

(a) All groups index points.

Group, sub-group and expenditure class	INDEX NUMBERS(a).....			PERCENTAGE CHANGE BETWEEN.....		CONTRIBUTION TO TOTAL CPI (ALL GROUPS INDEX POINTS)		
	Mar Qtr 2000	Dec Qtr 2000	Mar Qtr 2001	Dec Qtr 2000 and	Mar Qtr 2000 and	Dec Qtr 2000	Mar Qtr 2001	Change between Dec Qtr 2000 and Mar Qtr 2001
				Mar Qtr 2001	Mar Qtr 2001			
Food	129.1	133.4	137.6	3.1	6.6	22.90	23.63	0.73
Dairy and related products	142.6	141.1	142.4	0.9	-0.1	1.86	1.87	0.01
Milk	159.7	153.3	153.6	0.2	-3.8	0.97	0.97	—
Cheese	116.2	115.7	116.8	1.0	0.5	0.44	0.44	—
Ice cream and other dairy products	135.8	143.4	146.8	2.4	8.1	0.45	0.46	0.01
Bread and cereal products	144.5	146.8	150.0	2.2	3.8	2.82	2.88	0.06
Bread	167.9	170.8	175.6	2.8	4.6	1.05	1.08	0.03
Cakes and biscuits	132.1	136.5	139.0	1.8	5.2	1.16	1.18	0.02
Breakfast cereals	121.0	119.0	120.4	1.2	-0.5	0.30	0.31	0.01
Other cereal products	124.3	121.9	125.1	2.6	0.6	0.31	0.32	0.01
Meat and seafoods	115.2	115.7	120.4	4.1	4.5	3.30	3.44	0.14
Beef and veal	111.2	112.9	118.2	4.7	6.3	0.68	0.71	0.03
Lamb and mutton	125.9	124.9	133.6	7.0	6.1	0.32	0.34	0.02
Pork	125.0	121.8	127.8	4.9	2.2	0.25	0.26	0.01
Poultry	95.2	92.3	96.4	4.4	1.3	0.60	0.62	0.02
Bacon and ham	116.8	117.7	120.8	2.6	3.4	0.33	0.34	0.01
Other fresh and processed meat	121.7	125.0	129.2	3.4	6.2	0.55	0.57	0.02
Fish and other seafood	116.0	117.9	120.7	2.4	4.1	0.58	0.59	0.01
Fruit and vegetables	113.2	116.3	132.0	13.5	16.6	2.89	3.28	0.39
Fruit	122.5	132.3	140.4	6.1	14.6	1.35	1.43	0.08
Vegetables	107.7	106.3	127.6	20.0	18.5	1.54	1.85	0.31
Non-alcoholic drinks and snack food	139.3	136.8	139.9	2.3	0.4	3.05	3.12	0.07
Soft drinks, waters and juices	130.6	123.6	128.3	3.8	-1.8	1.53	1.59	0.06
Snacks and confectionery	150.4	153.6	154.8	0.8	2.9	1.52	1.53	0.01
Meals out and take away foods	128.8	142.5	143.4	0.6	11.3	6.82	6.86	0.04
Restaurant meals	130.8	145.3	146.1	0.6	11.7	2.82	2.83	0.01
Take away and fast foods	128.7	141.9	142.9	0.7	11.0	4.00	4.03	0.03
Other food	130.6	131.2	132.0	0.6	1.1	2.16	2.17	0.01
Eggs	152.0	147.9	149.4	1.0	-1.7	0.15	0.15	—
Jams, honey and sandwich spreads	144.5	140.5	146.0	3.9	1.0	0.22	0.22	—
Tea, coffee and food drinks	138.1	136.3	137.0	0.5	-0.8	0.41	0.41	—
Food additives and condiments	124.3	124.6	125.7	0.9	1.1	0.42	0.43	0.01
Fats and oils	119.7	118.5	117.9	-0.5	-1.5	0.27	0.27	—
Food n.e.c.	125.9	131.3	131.1	-0.2	4.1	0.69	0.69	—
Alcohol and tobacco	177.1	192.1	197.1	2.6	11.3	10.06	10.32	0.26
Alcoholic drinks	137.0	145.5	148.3	1.9	8.2	6.81	6.94	0.13
Beer	138.9	150.0	153.2	2.1	10.3	3.22	3.29	0.07
Wine	130.6	136.0	138.2	1.6	5.8	2.23	2.27	0.04
Spirits	138.8	145.5	148.5	2.1	7.0	1.35	1.38	0.03
Tobacco	275.6	313.9	326.2	3.9	18.4	3.25	3.38	0.13
Clothing and footwear	104.8	113.1	110.7	-2.1	5.6	7.00	6.85	-0.15
Men's clothing	106.5	113.4	111.2	-1.9	4.4	1.31	1.28	-0.03
Men's outerwear	104.6	111.8	108.7	-2.8	3.9	1.09	1.06	-0.03
Men's underwear, nightwear and socks	114.3	122.3	124.6	1.9	9.0	0.22	0.22	—
Women's clothing	106.5	117.9	113.6	-3.6	6.7	2.47	2.38	-0.09
Women's outerwear	102.5	113.8	108.5	-4.7	5.9	1.96	1.87	-0.09
Women's underwear, nightwear and hosiery	121.5	132.8	133.3	0.4	9.7	0.51	0.51	—
Children's and infants' clothing	107.4	117.2	114.0	-2.7	6.1	0.65	0.63	-0.02
Footwear	94.4	100.8	100.5	-0.3	6.5	1.12	1.12	—
Men's footwear	90.3	96.9	95.4	-1.5	5.6	0.34	0.34	—
Women's footwear	98.5	105.6	106.0	0.4	7.6	0.53	0.53	—
Children's footwear	94.0	98.3	98.6	0.3	4.9	0.24	0.24	—
Clothing accessories, supplies and services(b)	100.0	104.1	103.3	-0.8	3.3	1.46	1.45	-0.01
Clothing accessories and jewellery(b)	97.0	96.6	95.3	-1.3	-1.8	0.79	0.78	-0.01
Fabrics and knitting wool	100.6	105.5	105.6	0.1	5.0	0.15	0.15	—
Clothing services and shoe repair	140.3	155.5	155.5	—	10.8	0.52	0.52	—

Group, sub-group and expenditure class	INDEX NUMBERS(a).....			PERCENTAGE CHANGE BETWEEN.....		CONTRIBUTION TO TOTAL CPI (ALL GROUPS INDEX POINTS)		
	Mar Qtr 2000	Dec Qtr 2000	Mar Qtr 2001	Dec Qtr 2000 and	Mar Qtr 2000 and	Dec Qtr 2000	Mar Qtr 2001	Change between Dec Qtr 2000 and Mar Qtr 2001
				Mar Qtr 2001	Mar Qtr 2001			
Housing	100.7	107.7	108.2	0.5	7.4	26.51	26.62	0.11
Rents	125.8	128.6	129.8	0.9	3.2	7.16	7.22	0.06
Utilities	122.8	132.9	133.2	0.2	8.5	4.43	4.44	0.01
Electricity	118.2	130.3	131.0	0.5	10.8	2.34	2.35	0.01
Gas and other household fuels	125.8	139.8	139.8	—	11.1	0.98	0.98	—
Water and sewerage(b)	106.4	108.2	107.8	-0.4	1.3	1.11	1.11	—
Other housing	92.7	101.0	101.2	0.2	9.2	14.93	14.96	0.03
House purchase(b)	111.3	121.1	121.4	0.2	9.1	10.74	10.76	0.02
Property rates and charges(b)	108.8	114.2	113.5	-0.6	4.3	1.59	1.58	-0.01
House repairs and maintenance	125.0	138.7	140.2	1.1	12.2	2.59	2.62	0.03
Household furnishings, supplies and services	112.8	116.3	117.2	0.8	3.9	10.41	10.49	0.08
Furniture and furnishings	119.6	124.8	124.8	—	4.3	4.66	4.66	—
Furniture	121.9	127.6	127.3	-0.2	4.4	3.00	2.99	-0.01
Floor and window coverings	112.4	120.6	120.9	0.2	7.6	0.97	0.97	—
Towels and linen	120.1	118.2	119.2	0.8	-0.7	0.69	0.70	0.01
Household appliances, utensils and tools	106.6	107.5	109.0	1.4	2.3	2.51	2.55	0.04
Major household appliances	105.3	108.7	111.2	2.3	5.6	1.14	1.16	0.02
Small electric household appliances	105.3	106.1	107.5	1.3	2.1	0.36	0.36	—
Glassware, tableware and household utensils	104.4	104.2	104.2	—	-0.2	0.61	0.61	—
Tools	113.2	108.9	110.0	1.0	-2.8	0.41	0.41	—
Household supplies	122.1	122.4	124.2	1.5	1.7	2.38	2.41	0.03
Household cleaning agents	122.8	113.4	115.5	1.9	-5.9	0.50	0.51	0.01
Other household supplies	123.6	126.4	128.2	1.4	3.7	1.87	1.90	0.03
Household services	160.5	178.9	180.9	1.1	12.7	0.86	0.87	0.01
Health	160.2	161.9	166.4	2.8	3.9	5.94	6.10	0.16
Health services	164.1	168.6	169.9	0.8	3.5	4.56	4.60	0.04
Hospital and medical services	168.5	172.6	173.7	0.6	3.1	3.47	3.49	0.02
Optical services	126.3	133.8	134.4	0.4	6.4	0.21	0.21	—
Dental services	161.2	166.9	169.0	1.3	4.8	0.89	0.90	0.01
Pharmaceuticals	136.4	130.5	142.6	9.3	4.5	1.38	1.50	0.12
Transportation	130.1	136.4	136.7	0.2	5.1	19.86	19.91	0.05
Private motoring	127.9	133.8	134.0	0.1	4.8	18.70	18.72	0.02
Motor vehicles	104.6	101.6	103.5	1.9	-1.1	7.17	7.31	0.14
Automotive fuel	137.5	158.8	153.0	-3.7	11.3	6.01	5.79	-0.22
Motor vehicle repair and servicing	119.6	123.5	126.9	2.8	6.1	2.86	2.94	0.08
Motor vehicle parts and accessories	106.8	103.3	105.0	1.6	-1.7	1.23	1.26	0.03
Other motoring charges	164.2	170.0	171.0	0.6	4.1	1.42	1.43	0.01
Urban transport fares	164.9	179.9	183.0	1.7	11.0	1.16	1.18	0.02
Communication	97.5	104.9	104.4	-0.5	7.1	3.86	3.84	-0.02
Postal	116.0	119.3	119.3	—	2.8	0.20	0.20	—
Telecommunication	95.6	103.2	102.7	-0.5	7.4	3.66	3.64	-0.02

Group, sub-group and expenditure class	INDEX NUMBERS(a).....			PERCENTAGE CHANGE BETWEEN.....		CONTRIBUTIONS TO TOTAL CPI (ALL GROUPS INDEX POINTS)		
	Mar Qtr 2000	Dec Qtr 2000	Mar Qtr 2001	Dec Qtr 2000 and	Mar Qtr 2000 and	Dec Qtr 2000	Mar Qtr 2001	Change between Dec Qtr 2000 and Mar Qtr 2001
				Mar Qtr 2001	Mar Qtr 2001			
Recreation	120.2	124.6	124.5	-0.1	3.6	16.10	16.08	-0.02
Audio, visual and computing	73.1	70.4	71.1	1.0	-2.7	3.32	3.35	0.03
Audio, visual and computing equipment	57.0	53.7	53.8	0.2	-5.6	1.57	1.57	—
Audio, visual and computing media and services	104.7	102.8	104.5	1.7	-0.2	1.75	1.78	0.03
Books, newspapers and magazines	168.4	181.7	184.2	1.4	9.4	1.47	1.49	0.02
Books(b)	105.9	112.1	113.9	1.6	7.6	0.66	0.67	0.01
Newspapers and magazines(b)	108.4	119.0	120.4	1.2	11.1	0.82	0.83	0.01
Sport and other recreation	137.5	144.6	146.8	1.5	6.8	5.45	5.53	0.08
Sports and recreational equipment(b)	98.6	95.1	95.9	0.8	-2.7	0.80	0.81	0.01
Toys, games and hobbies(b)	97.8	92.5	97.0	4.9	-0.8	0.63	0.66	0.03
Sports participation(b)	107.3	121.6	122.7	0.9	14.4	1.13	1.14	0.01
Pets, pet foods and supplies	121.3	118.1	121.1	2.5	-0.2	0.52	0.53	0.01
Pet services including veterinary	153.3	171.1	173.2	1.2	13.0	0.46	0.46	—
Other recreational activities(b)	108.6	118.1	119.2	0.9	9.8	1.92	1.94	0.02
Holiday travel and accommodation	110.9	117.5	114.4	-2.6	3.2	5.86	5.71	-0.15
Domestic holiday travel and accommodation	121.4	127.7	121.0	-5.2	-0.3	3.32	3.15	-0.17
Overseas holiday travel and accommodation	98.1	105.6	106.3	0.7	8.4	2.54	2.56	0.02
Education	187.0	187.5	195.4	4.2	4.5	3.40	3.54	0.14
Preschool and primary education(c)	..	100.4	104.8	4.4	..	0.64	0.67	0.03
Secondary education(c)	..	100.0	106.3	6.3	..	1.18	1.25	0.07
Tertiary education(c)	..	100.3	102.9	2.6	..	1.58	1.62	0.04
Miscellaneous	155.3	165.0	166.7	1.0	7.3	5.25	5.30	0.05
Insurance services	184.1	213.7	217.4	1.7	18.1	1.95	1.98	0.03
Personal care	135.3	141.6	141.5	-0.1	4.6	2.82	2.82	—
Hairdressing and personal care services	138.6	155.1	156.2	0.7	12.7	1.04	1.05	0.01
Toiletries and personal care products	133.1	134.1	133.4	-0.5	0.2	1.78	1.77	-0.01
Child care	150.0	130.7	136.8	4.7	-8.8	0.48	0.50	0.02
All groups	125.2	131.3	132.7	1.1	6.0	131.3	132.7	1.4

(a) Unless otherwise specified, base of each index: 1989-90 = 100.0. (b) Base: June quarter 1998 = 100.0.

(c) Base: June quarter 2000 = 100.0.

	INDEX NUMBERS(a).....			PERCENTAGE CHANGE BETWEEN.....		CONTRIBUTION TO TOTAL CPI (ALL GROUPS INDEX POINTS)		
	Mar Qtr 2000	Dec Qtr 2000	Mar Qtr 2001	Dec Qtr 2000 and Mar Qtr 2001	Mar Qtr 2000 and Mar Qtr 2001	Dec Qtr 2000	Mar Qtr 2001	Change between Dec Qtr 2000 and Mar Qtr 2001
All groups	125.2	131.3	132.7	1.1	6.0	131.3	132.7	1.4
Selected components								
Goods component(b)	127.4	133.0	134.7	1.3	5.7	85.65	86.73	1.08
Services component(b)	121.8	128.9	129.8	0.7	6.6	45.65	45.96	0.31
Tradables component(b)(c)	102.0	105.4	106.9	1.4	4.8	61.02	61.90	0.88
Non-tradables component(b)(c)	104.8	111.4	112.2	0.7	7.1	70.28	70.80	0.52
All groups excluding								
Food	124.3	130.8	131.6	0.6	5.9	108.39	109.06	0.67
Alcohol and tobacco	121.3	126.9	128.1	0.9	5.6	121.24	122.38	1.14
Clothing and footwear	126.6	132.6	134.2	1.2	6.0	124.29	125.84	1.55
Housing	129.7	135.4	137.0	1.2	5.6	104.78	106.07	1.29
Household furnishings, supplies and services	127.7	134.1	135.5	1.0	6.1	120.89	122.21	1.32
Health	123.3	129.6	130.9	1.0	6.2	125.36	126.59	1.23
Transportation	124.4	130.5	132.1	1.2	6.2	111.43	112.79	1.36
Communication	125.6	131.7	133.1	1.1	6.0	127.43	128.85	1.42
Recreation	125.8	132.2	133.8	1.2	6.4	115.20	116.62	1.42
Education	124.4	130.7	132.0	1.0	6.1	127.89	129.15	1.26
Miscellaneous	123.9	129.9	131.3	1.1	6.0	126.05	127.39	1.34
Hospital and medical services	123.9	130.0	131.4	1.1	6.1	127.83	129.21	1.38

(a) Unless otherwise specified, base of each index:
1989-90 = 100.0

(b) Refer to paragraph 12 of the Explanatory Notes for
a description of this series.

(c) Base: June quarter 1998 = 100.0

ANALYTICAL SERIES, Index Numbers(a)(b)

MARKET GOODS AND SERVICES
EXCLUDING 'VOLATILE
ITEMS'.....

<i>Period</i>	<i>All groups</i>	<i>All groups excluding Housing</i>	<i>All groups excluding 'volatile items'</i>	<i>Goods</i>	<i>Services</i>	<i>Total</i>	<i>Tradables(c)</i>	<i>Non-tradables(c)</i>
1996-1997	120.3	123.9	125.2	122.5	122.1	122.4
1997-1998	120.3	125.4	127.2	123.5	126.1	124.2
1998-1999	121.8	126.9	129.0	124.9	129.4	126.1	100.4	101.0
1999-2000	124.7	129.4	131.5	127.1	133.8	128.9	102.1	104.0
1997								
March	120.5	124.5	125.6	122.6	122.8	122.7
June	120.2	124.8	126.1	122.8	123.4	123.0
September	119.7	124.4	126.1	122.8	124.7	123.3
December	120.0	125.2	126.9	123.3	125.6	123.9
1998								
March	120.3	125.7	127.6	123.8	126.7	124.5
June	121.0	126.3	128.2	124.0	127.4	124.9	100.0	100.0
September	121.3	126.6	128.6	124.3	127.7	125.2	100.1	100.5
December	121.9	127.1	129.0	124.5	129.0	125.7	100.2	101.2
1999								
March	121.8	126.7	129.0	125.1	130.1	126.4	100.2	101.0
June	122.3	127.3	129.4	125.7	130.6	126.9	101.0	101.2
September	123.4	128.3	130.2	126.1	132.1	127.7	101.7	102.3
December	124.1	128.6	131.0	126.8	133.4	128.5	101.5	103.5
2000								
March	125.2	129.7	131.9	127.4	134.1	129.2	102.0	104.8
June	126.2	130.8	132.7	128.0	135.5	130.0	103.0	105.5
September	130.9	134.9	137.4	131.5	143.3	134.8	105.2	110.9
December	131.3	135.4	137.7	131.9	143.8	135.2	105.4	111.4
2001								
March	132.7	137.0	139.1	133.3	144.2	136.3	106.9	112.2

(a) Unless otherwise specified, base of each index: 1989-90 = 100.0.

(b) Refer to paragraph 12 of the Explanatory Notes for a description of these series.

(c) Base: June quarter 1998 = 100.0.

ANALYTICAL SERIES, Percentage Changes(a)

MARKET GOODS AND SERVICES
EXCLUDING 'VOLATILE
ITEMS'.....

Period	All groups	All groups excluding Housing	All groups excluding 'volatile items'	Goods	Services	Total	Tradables	Non-tradables
PERCENTAGE CHANGE (from previous financial year)								
1996-1997	1.3	2.3	2.3	1.6	3.0	1.9
1997-1998	0.0	1.2	1.6	0.8	3.3	1.5
1998-1999	1.2	1.2	1.4	1.1	2.6	1.5
1999-2000	2.4	2.0	1.9	1.8	3.4	2.2	1.7	3.0
PERCENTAGE CHANGE (from corresponding quarter of previous year)								
1997								
March	1.3	2.5	2.3	1.5	2.6	1.8
June	0.3	2.0	2.1	0.7	3.2	1.4
September	-0.3	1.4	1.6	0.5	3.6	1.3
December	-0.2	1.3	1.7	0.7	3.3	1.3
1998								
March	-0.2	1.0	1.6	1.0	3.2	1.5
June	0.7	1.2	1.7	1.0	3.2	1.5
September	1.3	1.8	2.0	1.2	2.4	1.5
December	1.6	1.5	1.7	1.0	2.7	1.5
1999								
March	1.2	0.8	1.1	1.1	2.7	1.5
June	1.1	0.8	0.9	1.4	2.5	1.6	1.0	1.2
September	1.7	1.3	1.2	1.4	3.4	2.0	1.6	1.8
December	1.8	1.2	1.6	1.8	3.4	2.2	1.3	2.3
2000								
March	2.8	2.4	2.2	1.8	3.1	2.2	1.8	3.8
June	3.2	2.7	2.6	1.8	3.8	2.4	2.0	4.2
September	6.1	5.1	5.5	4.3	8.5	5.6	3.4	8.4
December	5.8	5.3	5.1	4.0	7.8	5.2	3.8	7.6
2001								
March	6.0	5.6	5.5	4.6	7.5	5.5	4.8	7.1
PERCENTAGE CHANGE (from previous quarter)								
1997								
March	0.2	0.7	0.6	0.1	1.0	0.3
June	-0.2	0.2	0.4	0.2	0.5	0.2
September	-0.4	-0.3	0.0	0.0	1.1	0.2
December	0.3	0.6	0.6	0.4	0.7	0.5
1998								
March	0.3	0.4	0.6	0.4	0.9	0.5
June	0.6	0.5	0.5	0.2	0.6	0.3
September	0.2	0.2	0.3	0.2	0.2	0.2	0.1	0.5
December	0.5	0.4	0.3	0.2	1.0	0.4	0.1	0.7
1999								
March	-0.1	-0.3	0.0	0.5	0.9	0.6	0.0	-0.2
June	0.4	0.5	0.3	0.5	0.4	0.4	0.8	0.2
September	0.9	0.8	0.6	0.3	1.1	0.6	0.7	1.1
December	0.6	0.2	0.6	0.6	1.0	0.6	-0.2	1.2
2000								
March	0.9	0.9	0.7	0.5	0.5	0.5	0.5	1.3
June	0.8	0.8	0.6	0.5	1.0	0.6	1.0	0.7
September	3.7	3.1	3.5	2.7	5.8	3.7	2.1	5.1
December	0.3	0.4	0.2	0.3	0.3	0.3	0.2	0.5
2001								
March	1.1	1.2	1.0	1.1	0.3	0.8	1.4	0.7

(a) Refer to paragraph 12 of the Explanatory Notes for a description of these series.

INTERNATIONAL COMPARISONS, All Groups Excluding Housing–Index Numbers(a)(b)

Period	Australia	New Zealand	Hong Kong	Indonesia	Japan	Korea, Republic of	Singapore	Taiwan	Canada	United States of America	Germany	United Kingdom
1996-1997	123.9	113.7	166.8	174.1	108.2	151.3	118.1	125.7	118.8	124.3	118.2	131.5
1997-1998	125.4	114.9	173.0	232.7	112.4	162.1	119.4	127.2	120.6	125.8	120.3	134.6
1998-1999	126.9	116.9	171.2	368.3	112.4	169.0	118.5	128.2	122.0	127.2	120.7	137.2
1999-2000	129.4	118.7	165.8	367.1	111.6	172.1	120.7	129.3	125.0	130.9	121.8	139.3
1997												
March	124.5	113.9	167.2	177.1	107.2	152.4	118.4	124.7	119.2	124.7	118.7	131.6
June	124.8	114.1	169.8	177.7	110.7	153.8	118.8	125.7	119.8	125.1	118.8	132.8
September	124.4	114.5	171.2	183.3	112.3	155.4	119.9	127.6	120.3	125.3	120.3	133.5
December	125.2	114.9	172.8	195.7	112.5	157.9	120.0	125.7	120.1	125.9	119.9	134.3
1998												
March	125.7	115.0	172.9	254.5	112.0	167.3	119.1	127.1	120.9	125.6	120.2	134.5
June	126.3	115.3	175.1	297.4	112.6	167.7	118.7	128.2	121.2	126.3	120.7	136.1
September	126.6	116.4	174.3	360.6	111.9	167.8	118.3	128.0	121.4	126.4	121.0	136.1
December	127.1	116.5	172.8	363.2	113.2	168.9	117.8	129.9	121.4	126.8	120.5	136.9
1999												
March	126.7	117.1	169.2	377.9	111.9	169.2	118.4	127.5	121.7	127.1	120.4	137.1
June	127.3	117.6	168.5	371.3	112.4	169.9	119.3	127.5	123.4	128.4	120.9	138.6
September	128.3	117.8	166.8	360.3	111.9	170.1	120.2	128.4	124.4	129.2	121.3	138.4
December	128.6	118.2	166.5	367.5	111.9	172.3	120.2	129.6	124.5	130.2	121.2	139.1
2000												
March	129.7	118.9	164.6	370.7	111.1	172.9	121.2	128.9	124.9	131.3	122.2	139.1
June	130.8	119.8	165.1	369.7	111.4	172.9	121.0	130.3	126.2	132.8	122.4	140.7
September	134.9	121.8	164.8	376.7	111.0	176.1	122.2	131.3	127.3	133.7	123.2	140.5
December	135.4	123.4	165.6	403.3	111.2	177.6	122.8	132.4	127.5	134.6	123.0	141.2
2001												
March	137.0	123.8	n.y.a.	406.1	n.y.a.	n.y.a.	n.y.a.	129.8	n.y.a.	135.7	124.5	140.9

(a) Base of each index: 1989–1990 = 100.0

(b) Refer to paragraphs 14-16 of the Explanatory Notes for further information.

INTERNATIONAL COMPARISONS, All Groups Excluding Housing–Percentage Changes(a)

Period	Australia	New Zealand	Hong Kong	Indonesia	Japan	Korea, Republic of	Singapore	Taiwan	Canada	United States of America	Germany	United Kingdom
PERCENTAGE CHANGE (from previous financial year)												
1996-1997	2.3	1.6	4.6	6.4	0.8	4.8	1.8	2.6	2.4	2.8	1.0	2.5
1997-1998	1.2	1.1	3.7	33.7	3.9	7.1	1.1	1.2	1.5	1.2	1.8	2.4
1998-1999	1.2	1.7	-1.0	58.3	0.0	4.3	-0.8	0.8	1.2	1.1	0.3	1.9
1999-2000	2.0	1.5	-3.2	-0.3	-0.7	1.8	1.9	0.9	2.5	2.9	0.9	1.5
PERCENTAGE CHANGE (from corresponding quarter of previous year)												
1997												
March	2.5	1.7	5.0	6.0	0.3	5.0	1.8	2.0	2.8	2.9	1.3	2.4
June	2.0	1.2	4.3	5.7	2.7	3.8	1.7	1.1	2.1	2.0	1.0	2.2
September	1.4	1.3	4.6	8.8	4.7	3.9	2.2	1.2	2.4	1.8	2.0	2.5
December	1.3	1.0	3.7	13.1	4.7	5.6	2.0	-0.5	1.4	1.5	2.0	2.4
1998												
March	1.0	1.0	3.4	43.7	4.5	9.8	0.6	1.9	1.4	0.7	1.3	2.2
June	1.2	1.1	3.1	67.4	1.7	9.0	-0.1	2.0	1.2	1.0	1.6	2.5
September	1.8	1.7	1.8	96.7	-0.4	8.0	-1.3	0.3	0.9	0.9	0.6	1.9
December	1.5	1.4	0.0	85.6	0.6	7.0	-1.8	3.3	1.1	0.7	0.5	1.9
1999												
March	0.8	1.8	-2.1	48.5	-0.1	1.1	-0.6	0.3	0.7	1.2	0.2	1.9
June	0.8	2.0	-3.8	24.8	-0.2	1.3	0.5	-0.5	1.8	1.7	0.2	1.8
September	1.3	1.2	-4.3	-0.1	0.0	1.4	1.6	0.3	2.5	2.2	0.2	1.7
December	1.2	1.5	-3.6	1.2	-1.1	2.0	2.0	-0.2	2.6	2.7	0.6	1.6
2000												
March	2.4	1.5	-2.7	-1.9	-0.7	2.2	2.4	1.1	2.6	3.3	1.5	1.5
June	2.7	1.9	-2.0	-0.4	-0.9	1.8	1.4	2.2	2.3	3.4	1.2	1.5
September	5.1	3.4	-1.2	4.6	-0.8	3.5	1.7	2.3	2.3	3.5	1.6	1.5
December	5.3	4.4	-0.5	9.7	-0.6	3.1	2.2	2.2	2.4	3.4	1.5	1.5
2001												
March	5.6	4.1	n.y.a.	9.5	n.y.a.	n.y.a.	n.y.a.	0.7	n.y.a.	3.4	1.9	1.3
PERCENTAGE CHANGE (from previous quarter)												
1997												
March	0.7	0.1	0.4	2.3	-0.3	1.9	0.6	-1.3	0.6	0.5	1.0	0.3
June	0.2	0.2	1.6	0.3	3.3	0.9	0.3	0.8	0.5	0.3	0.1	0.9
September	-0.3	0.4	0.8	3.2	1.4	1.0	0.9	1.5	0.4	0.2	1.3	0.5
December	0.6	0.3	0.9	6.8	0.2	1.6	0.1	-1.5	-0.2	0.5	-0.3	0.6
1998												
March	0.4	0.1	0.1	30.0	-0.4	6.0	-0.8	1.1	0.7	-0.2	0.3	0.1
June	0.5	0.3	1.3	16.9	0.5	0.2	-0.3	0.9	0.2	0.6	0.4	1.2
September	0.2	1.0	-0.5	21.3	-0.6	0.1	-0.3	-0.2	0.2	0.1	0.2	0.0
December	0.4	0.1	-0.9	0.7	1.2	0.7	-0.4	1.5	0.0	0.3	-0.4	0.6
1999												
March	-0.3	0.5	-2.1	4.0	-1.1	0.2	0.5	-1.8	0.2	0.2	-0.1	0.1
June	0.5	0.4	-0.4	-1.7	0.4	0.4	0.8	0.0	1.4	1.0	0.4	1.1
September	0.8	0.2	-1.0	-3.0	-0.4	0.1	0.8	0.7	0.8	0.6	0.3	-0.1
December	0.2	0.3	-0.2	2.0	0.0	1.3	0.0	0.9	0.1	0.8	-0.1	0.5
2000												
March	0.9	0.6	-1.1	0.9	-0.7	0.3	0.9	-0.5	0.3	0.8	0.8	0.0
June	0.8	0.8	0.3	-0.3	0.3	0.0	-0.2	1.1	1.0	1.1	0.2	1.2
September	3.1	1.7	-0.2	1.9	-0.4	1.9	1.0	0.8	0.9	0.7	0.7	-0.1
December	0.4	1.3	0.5	7.1	0.2	0.9	0.5	0.8	0.2	0.7	-0.2	0.5
2001												
March	1.2	0.3	n.y.a.	0.7	n.y.a.	n.y.a.	n.y.a.	-2.0	n.y.a.	0.8	1.2	-0.2

(a) Refer to paragraphs 14-16 of the Explanatory Notes for further information.

EXPLANATORY NOTES

BRIEF DESCRIPTION OF THE CPI

1 The Consumer Price Index (CPI) measures quarterly changes in the price of a 'basket' of goods and services which account for a high proportion of expenditure by the CPI population group (i.e. metropolitan households). This 'basket' covers a wide range of goods and services, arranged in the following eleven groups:

- food
- alcohol and tobacco
- clothing and footwear
- housing
- household furnishings, supplies and services
- health
- transportation
- communication
- recreation
- education
- miscellaneous.

2 The capital city indexes measure price movements over time in each city individually. They do not measure differences in retail price levels between cities.

3 Further information about the CPI is contained in the booklet *A Guide to the Consumer Price Index, 14th Series* (Cat. no. 6440.0) which is available on the ABS Website at www.abs.gov.au, or from the ABS on request.

PRICES

4 The frequency of price collection by item varies as necessary to obtain reliable price measures. Prices of some items are volatile (i.e. their prices may vary many times each quarter) and for these items frequent price observations are necessary to obtain a reliable measure of the average price for the quarter. Each month prices are collected at regular intervals for goods such as milk, bread, fresh meat and seafood, fresh fruit and vegetables, petrol, alcohol and tobacco and holiday travel and accommodation. For most other items, price volatility is not a problem and prices are collected once a quarter. There are a few items where prices are changed at infrequent intervals, for example education fees where prices are set once a year. In these cases, the frequency of price collection is modified accordingly.

5 In order to facilitate a more even spread of field collection workload the bulk of the items for which prices are collected quarterly are priced in the first two months of each quarter (i.e. July/August, October/November, January/February, April/May). With a few exceptions items priced in the third month are those subject to price changes at discrete points of time (e.g. electricity and postal charges); in these cases information about any changes in price during the quarter is obtained so that an average price for the whole quarter can be calculated.

WEIGHTING PATTERN

6 There are 89 expenditure classes (that is, groupings of like items) in the fourteenth series CPI and each expenditure class has its own weight, or measure of relative importance. In calculating the index, price changes for the various expenditure classes are combined using these weights.

7 Changes in the weighting pattern have been made at approximately five-yearly intervals to take account of changes in household spending patterns. The CPI now comprises fourteen series of price indexes which have been linked to form a continuous series. The current weighting pattern for the CPI is given in *A Guide to the Consumer Price Index, 14th Series* (Cat. no. 6440.0).

EXPLANATORY NOTES

ANALYSIS OF CPI CHANGES

8 Movements in indexes from one period to another can be expressed either as changes in index points or as percentage changes. The following example illustrates the method of calculating changes in index points and percentage changes between any two periods:

All groups CPI: Weighted average of eight capital cities.

Index numbers:

March Quarter 2001	132.7 (see Table 1)
less December Quarter 2000	131.3 (see Table 1)
Change in index points	1.40

$$\text{Percentage change} = \frac{1.40}{131.3} \times 100 = 1.1\%$$

9 Percentage changes are calculated to illustrate three different kinds of movements in index numbers:

- movements between consecutive financial years (where the index numbers for financial years are simple averages of the quarterly index numbers),
- movements between corresponding quarters of consecutive years, and
- movements between consecutive quarters.

10 Table 7 provides a detailed analysis, for the weighted average of eight capital cities, of movements in the CPI since the previous quarter, including information on movements for groups, sub-groups and expenditure classes. It also shows the contribution which each makes to the total CPI. For instance, the dairy and related products sub-group contributed 1.87 index points to the total All groups index number of 132.7 for March Quarter 2001. The final column shows contributions to the change in All Groups index points by each group, sub-group and expenditure class.

SPECIAL SERIES

11 Various series are presented in Tables 8, 9 and 10 in this publication which are helpful for analytical purposes. These series are compiled by taking subsets of the CPI basket. (A complete list of CPI groups, subgroups and expenditure classes is contained in Tables 6 and 7.)

12 Some of the compiled series are self explanatory, such as 'All groups excluding Food'. Other series and their composition are described below:

All groups, goods component: comprises the Food group (except Restaurant meals), Alcohol and tobacco group, Clothing and footwear group (except Clothing services and shoe repair) and Household furnishings, supplies and services group (except Household services); the Utilities, Audio, visual and computing and Books, newspapers and magazines sub-groups; and the House purchase, Pharmaceuticals, Motor vehicles, Automotive fuel, Motor vehicle parts and accessories, Sports and recreational equipment, Toys, games and hobbies, Pets, pet foods and supplies and Toiletries and personal care products expenditure classes.

All groups, services component: comprises all items not included in the 'All groups, goods component'.

All groups, tradables component: comprises all items whose prices are largely determined on the world market.

All groups, non-tradables component: comprises all items not included in the 'All groups, tradables component'.

All groups excluding 'volatile items': comprises the All groups CPI excluding Fruit and vegetables and Automotive fuel.

EXPLANATORY NOTES

SPECIAL SERIES *continued*

Market goods and services excluding 'volatile items': in addition to the items excluded from the series "All groups excluding 'volatile items'", also excludes: Utilities, Property rates and charges, Health, Other motoring charges, Urban transport fares, Postal, Education and Child care.

13 A detailed description of the special and analytical series was published in Appendix 1 to the September quarter 2000 issue of *Consumer Price Index, Australia* (Cat. no. 6401.0). The ABS is grateful for the assistance of the Reserve Bank of Australia for specifying the items included in the "All groups excluding 'volatile items'" and "Market goods and services excluding 'volatile items'". The Reserve Bank of Australia does not accord any special policy status to these series.

INTERNATIONAL COMPARISONS

14 In analysing price movements in Australia, an important consideration is Australia's performance relative to other countries. However, due to the many differences in the structure of the housing sector in different countries and in the way that housing is treated in their CPIs, a simple comparison of All groups (or headline) CPIs is often inappropriate. To provide a better basis for international comparisons, the Fourteenth International Conference of Labour Statisticians adopted a resolution which called for countries to 'provide for dissemination at the international level of an index which excludes shelter, in addition to the all-items index'.

15 Table 11 presents indexes for selected countries on a basis consistent with the above resolution and comparable to the Australian series 'All groups excluding Housing'. To facilitate comparisons all indexes in this table have, where necessary, been converted to a quarterly basis and re-referenced to a base of 1989–90 = 100.0.

16 In producing Table 11, the ABS is grateful for the assistance of the relevant national statistical agencies which have either directly supplied indexes for all items excluding shelter or data to enable their derivation.

RELATED PUBLICATIONS

17 Current publications produced by the ABS are listed in the Catalogue of Publications and Products, Australia (Cat. no. 1101.0). The ABS also issues, on Tuesdays and Fridays, a Release Advice (Cat. no. 1105.0) which lists publications to be released in the next few days. The Catalogue and Release Advice are available from any ABS office.

18 Users may also wish to refer to the following publications:

- *A Guide to the Consumer Price Index, 14th series* (Cat. no. 6440.0)
- *Average Retail Prices of Selected Items, Eight Capital Cities* (Cat. no. 6403.0)
- *House Price Indexes: Eight Capital Cities* (Cat. no. 6416.0)
- *Information Paper: Price Indexes and the New Tax System* (Cat. no. 6425.0)
- *Information Paper : Introduction of the 14th Series Australian Consumer Price Index* (Cat. no. 6456.0)

UNPUBLISHED STATISTICS

19 As well as the statistics included in this and related publications, the ABS may have other relevant unpublished data available. Inquiries should be made to Steve Whennan on 02 6252 6251 or to the National Information Service on 1300 135 070.

SYMBOLS AND OTHER USAGES

—	nil or rounded to zero
..	not applicable
n.a.	not available
n.y.a.	not yet available
r	revised
n.e.c.	not elsewhere classified

FOR MORE INFORMATION...

- INTERNET** www.abs.gov.au the ABS web site is the best place to start for access to summary data from our latest publications, information about the ABS, advice about upcoming releases, our catalogue, and Australia Now—a statistical profile.
- LIBRARY** A range of ABS publications is available from public and tertiary libraries Australia-wide. Contact your nearest library to determine whether it has the ABS statistics you require, or visit our web site for a list of libraries.
- CPI INFOLINE** For current and historical Consumer Price Index data, call 1902 981 074 (call cost 77c per minute).
- DIAL-A-STATISTIC** For the latest figures for National Accounts, Balance of Payments, Labour Force, Average Weekly Earnings, Estimated Resident Population and the Consumer Price Index call 1900 986 400 (call cost 77c per minute).

INFORMATION SERVICE

Data which have been published and can be provided within five minutes are free of charge. Our information consultants can also help you to access the full range of ABS information—ABS user-pays services can be tailored to your needs, time frame and budget. Publications may be purchased. Specialists are on hand to help you with analytical or methodological advice.

- PHONE** **1300 135 070**
- EMAIL** **client.services@abs.gov.au**
- FAX** 1300 135 211
- POST** Client Services, ABS, GPO Box 796, Sydney 1041

WHY NOT SUBSCRIBE?

ABS subscription services provide regular, convenient and prompt deliveries of ABS publications and products as they are released. Email delivery of monthly and quarterly publications is available.

- PHONE** 1300 366 323
- EMAIL** subscriptions@abs.gov.au
- FAX** 03 9615 7848
- POST** Subscription Services, ABS, GPO Box 2796Y, Melbourne 3001



2640100003013
ISSN 1442-3987

RRP \$19.50